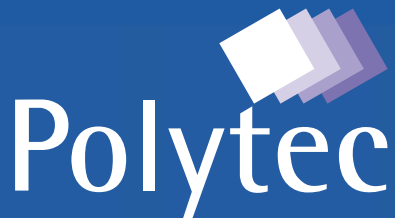


# Polytec

*Innovation through design*



## Self-Supporting Glazing Bar System



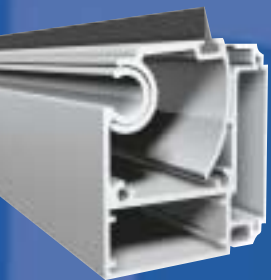
## Self-Supporting Glazing Bar System

Our new range of glazing bars have been designed to provide a range of spanning distances for a multitude of applications from domestic lean-to conservatories to large commercial glazing areas. Polytec bars are designed to make installation as quick and easy as possible and are complemented by a simple and effective variable pitch wall plate and eaves beam system.

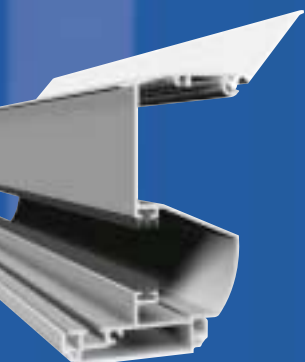
All Polytec self supporting bars, wall plates and eaves beams are supplied in a range of lengths and come complete with all structural aluminium profiles, PVC top cappings and undercladding, gaskets, end caps and fixing screws. All products are conveniently packed in individual poly-tubes for today's fast moving trade sales outlets.



**Polytec 'Universal Edge' Bar** is used at the verge ends of lean-to roofs to finish the edges. This bar is used with both 'Polytec 70' and 'Polytec 85' bars and suitable for 16mm to 25mm thick glazing. The one piece top capping incorporates a side trim to cloak vertical glazing detail.

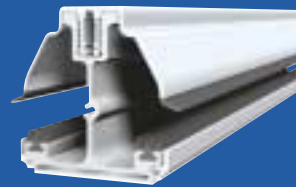


**Polytec Variable Pitch 'Eaves Beam'** provides a strong and simple solution to fix bars at the eaves on top of the windows or up-stands. A flipper gasket seals between the glazing bars. The eaves beam can be fixed from either above or below and is variable pitch from 2.5° to 30°

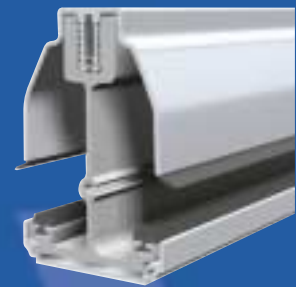


**Polytec Variable Pitch 'Wallplate'** is very simple to install between 2.5° to 30° pitch. When screw fixed to the wall, bars bolt onto the wall plate and glazing is pushed up into the glazing aperture and sealed effectively. The wallplate can be conveniently flashed prior to fitting the roof.

**'Polytec 70' Standard Bar** is the smallest and most economical self supporting bar typically used for smaller domestic lean-to applications or over purlins on larger roofs. It has a maximum span of 3.15 metres at 600mm centres and is suitable for 16mm to 25mm polycarbonate sheet.



**'Polytec 85' Heavy Duty Bar** is for larger lean-to roofs or commercial glazing applications where longer spans or heavier loading specifications are required. It has a maximum self supporting span of up to 4.15 metres at 600mm centres and is suitable for 16mm to 25mm polycarbonate sheet or glass units (contact our sales office for spanning details on glass units).



**'Polytec 110' Super Heavy Duty Bar**  is used for large roof and low pitch roof glazing applications and is capable of spanning up to 5.4 metres at 600mm centres. The Polytec 110 bar is used exclusively in the System 40 Roof System with 40mm polycarbonate panels. This glazing bar uses a larger wall plate than the standard wall plate.





Variable Pitch Wall Plate and Variable Pitch Eaves Beam

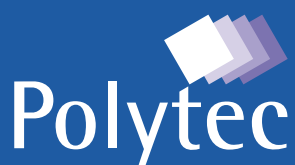
Spanning Guide (based on 600 N/m<sup>2</sup> loading when used with polycarbonate sheet)

	Width between bars (centres) mm	Maximum length mm
 <p><b>'Polytec 70'</b> Standard Bar</p>	600	3150
	700	3000
	800	2850
	900	2750
 <p><b>'Polytec 85'</b> Heavy Duty Bar</p>	600	4150
	700	3950
	800	3800
	900	3650
 <p><b>'Polytec 110'</b>  Super Heavy Duty Bar</p>	600	5400
	700	5200
	800	5000
	900	4800

For further information on loading/deflection or when using glass, please contact our sales office.

The Polytec Self Supporting Glazing Bar Range is available as a Main Bar and Universal Edge Bar, in 2.5, 3.0, 3.5, 4.0 and 6.0 metre lengths in White PVCu or Mahogany Woodgrain. Each product is packed complete with structural aluminium bar, relevant glazing plastics, gaskets, end cap, fixing screws and colour coded caps together in individual poly-tubes. Wall plates and eaves beams are available in white and mahogany/brown in 3.0, 4.0 and 6.0 metre lengths.

For prices, please refer to the Polytec Glazing Bars and Accessories Price List.



Unit 32, Fern Close  
Pen-y-Fan Industrial Estate  
Crumlin, Nr. Newport  
South Wales NP11 3EH

Telephone : 01495 244323  
Fax : 01495 246686  
e-mail : [polytec@macrolux.co.uk](mailto:polytec@macrolux.co.uk)  
[www.macrolux.co.uk](http://www.macrolux.co.uk)

*Available From...*